

The background of the entire image is a dense, close-up photograph of green fern fronds. The fronds are layered and create a rich, textured pattern of various shades of green, from light lime to deep forest green. In the center of the image, there is a large white circle containing text.

Our Kerikeri

- COMMUNITY LEADS CHANGE -

Community Meeting
Wednesday, 3rd May, Turner Centre

Agenda

**Our
Kerikeri**

- COMMUNITY LEADS CHANGE -

- Welcome/Karakia
- Purpose of meeting
- What is happening – the facts
- Expectations
- Panel 1 – Pre-scripted questions
- Break
- Panel 1 – Questions from the floor
- Where to from here?
- Panel 2 - Political Panel perspectives
- Closing Comments/Karakia

Meeting Purpose

**Our
Kerikeri**

- COMMUNITY LEADS CHANGE -

- ✓ **Understand the facts as they stand**
- ✓ **Gain knowledge of any future plans**
- ✓ **Learn about the process and limitations**
- ✓ **Find out what options there are for the community to ensure the best outcomes**
- ✓ **Learn how to get involved and stay updated**

Who is Our Kerikeri?



**A Charitable trust born from an idea that
Community Leads Change**



The Facts - existing public homes

**Our
Kerikeri**

- COMMUNITY LEADS CHANGE -



Kāinga Ora homes

Public Housing Plan aims to deliver:

- between 230 and 380 new public homes by June 2024
- between 20 and 80 transitional homes over the same period



	Public Housing	Transitional Housing
Kaitaia	260	1
Kaikohe	199	0
Kerikeri	43	0
Kawakawa	40	0
Other FNDC	141	0
Far North District total	683	1
Whangārei central	27	0
Ruakākā	28	0
Hikurangi	9	0
Other WDC	1401	14
Whangārei District total	1,465	14
Dargaville	102	0
Other KDC	17	0
Kaipara District total	119	0
Total Northland	2,267	15

The Facts - Plans

**Our
Kerikeri**

- COMMUNITY LEADS CHANGE -

Focus areas for development

- Our focus is on locating homes near jobs, amenities and services.
- The majority of new investment will be in the seven areas shown.
- We will continue to seek to understand, support and enable Māori and wider community aspirations for housing.
- We will continue to work with others to enable housing supply through council district plan changes, structure plans, infrastructure planning and project-level support.



What we know



Recent Purchases – Kāinga Ora

4 King Street: \$990k
3 Clark Road: \$1.1m
5 Clark Road: Undisclosed



115 Kerikeri Road
Purchase: \$2.75m

What we know

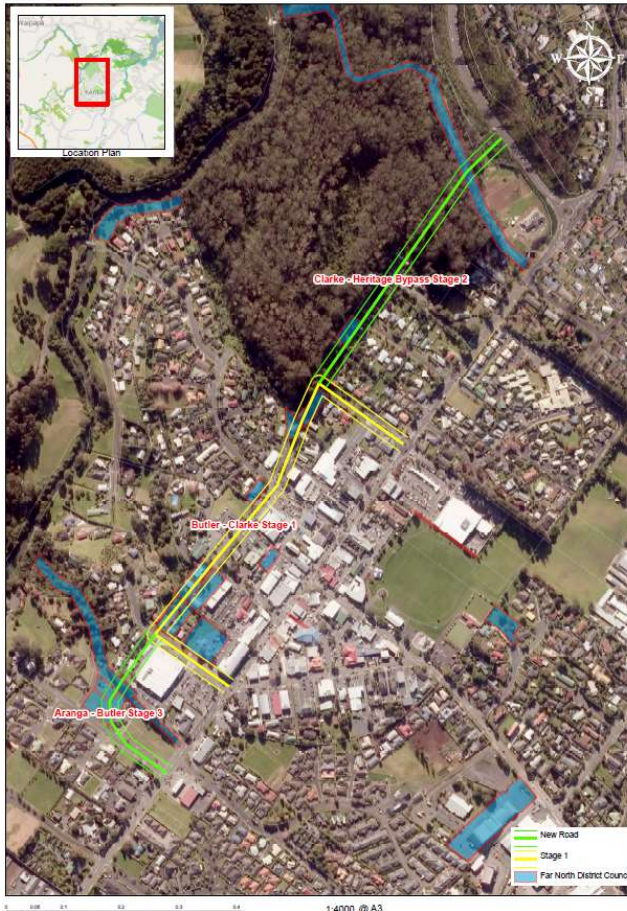
**Our
Kerikeri**

- COMMUNITY LEADS CHANGE -

Future CBD Ring Road Stages

Figure 7. Kerikeri CBD Ring Road stages and purchased properties

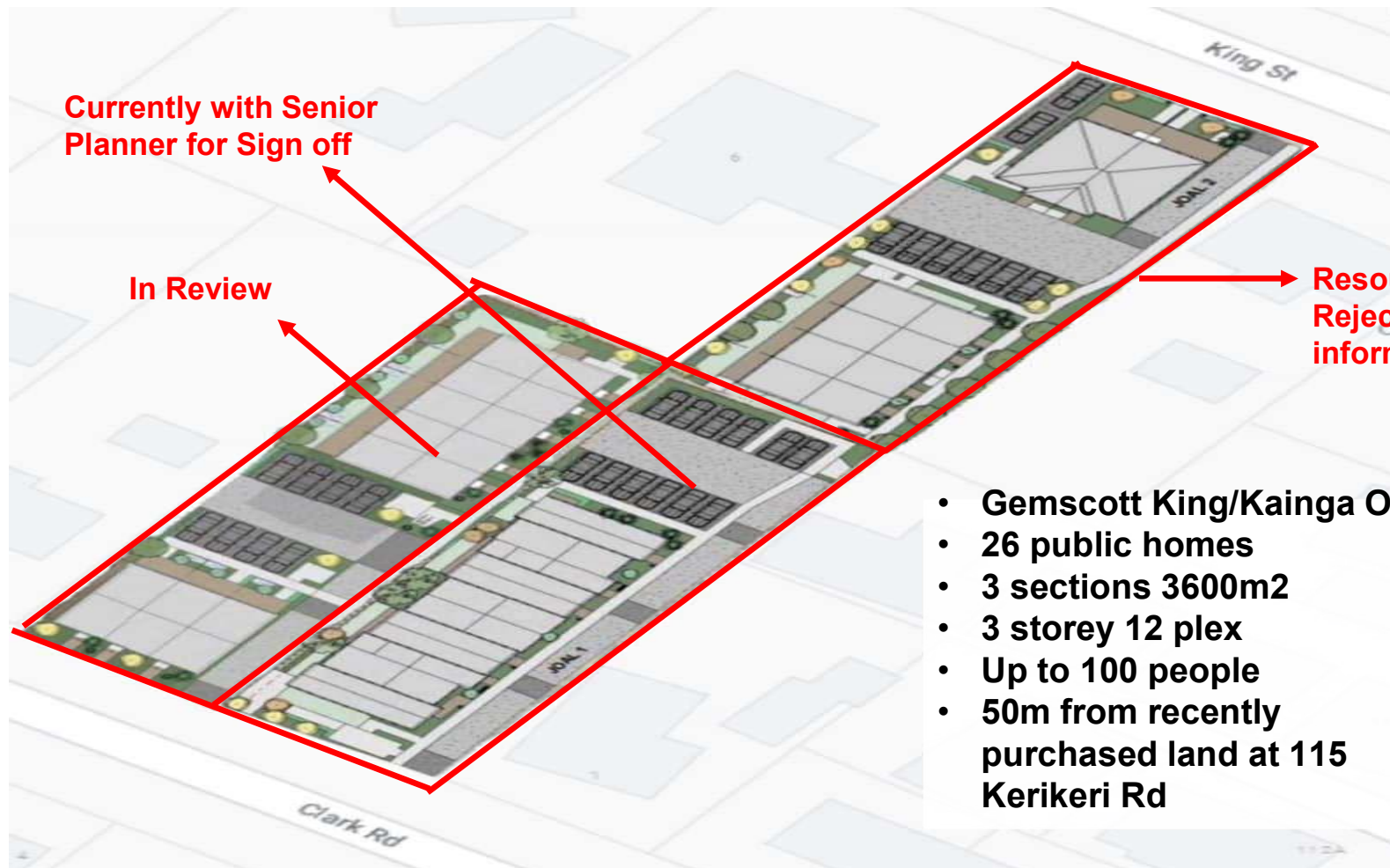
Kerikeri Area Transport Network Plan



What We Know - CLARK RD/KING STREET

**Our
Kerikeri**

- COMMUNITY LEADS CHANGE -



Currently with Senior
Planner for Sign off

In Review

Resource Consent
Rejected - missing
information

- Gemscott King/Kainga Ora
- 26 public homes
- 3 sections 3600m²
- 3 storey 12 plex
- Up to 100 people
- 50m from recently purchased land at 115 Kerikeri Rd

Clark Road Developments

**Our
Kerikeri**

- COMMUNITY LEADS CHANGE -



What we know

**Our
Kerikeri**

- COMMUNITY LEADS CHANGE -

Recent Purchases- Ministry of Housing & Urban Development (MHUD)



57A Hall Road: \$6m

- **56 public and private homes**
- **At least 30% of the site will be public housing and/or affordable homes.**

**Resource Consent
Approved**

What we know



Recent Purchases- Ministry of Housing & Urban Development (MHUD)



Effects



- A lot of large changes happening quickly
- Over doubles the number of social houses around our CBD
- Around 10% increase in population central Kerikeri
- Concentrates 200 social housing tenants in 2 development clusters within 50m radius
- Kerikeri's first 3 storey high, medium density apartment living. Concerns around lack of green space
- Significant change to social structure of host neighbourhoods
- Unknown impact - no social impact assessment

Our Kerikeri's View

**Our
Kerikeri**

- COMMUNITY LEADS CHANGE -

We are being treated like a City, but not recognised, funded, or planned like one.



Questions to the Panel

**Our
Kerikeri**

- COMMUNITY LEADS CHANGE -



Questions to the Political Candidates

**Our
Kerikeri**

- COMMUNITY LEADS CHANGE -



Where to from here?

**Our
Kerikeri**

- COMMUNITY LEADS CHANGE -



Options



- **Get involved in;**
 - **OKK and VKK's Proposed District Plan submissions and hearings. Get the rules right in the plan.**
 - **The Spatial Plan process. The first document is out in June/July.**
 - **Advocate for a downtown Masterplan and then get involved in the creation of it!**
- **If decision is to not notify, options are:**
 - **Do nothing. Hopefully any concerns won't be realised.**
 - **Judicial Review on Resource Consent Decision?**

THANK YOU

**Volunteers
Panel Members
Turner Centre
Tania McInnes**

WE APPRECIATE YOU ALL